



Glass Aftercare

proactive & reactive glazing and façade maintenance

Open Entrances

innovative entrances and frameless glass solutions

together we've got you covered



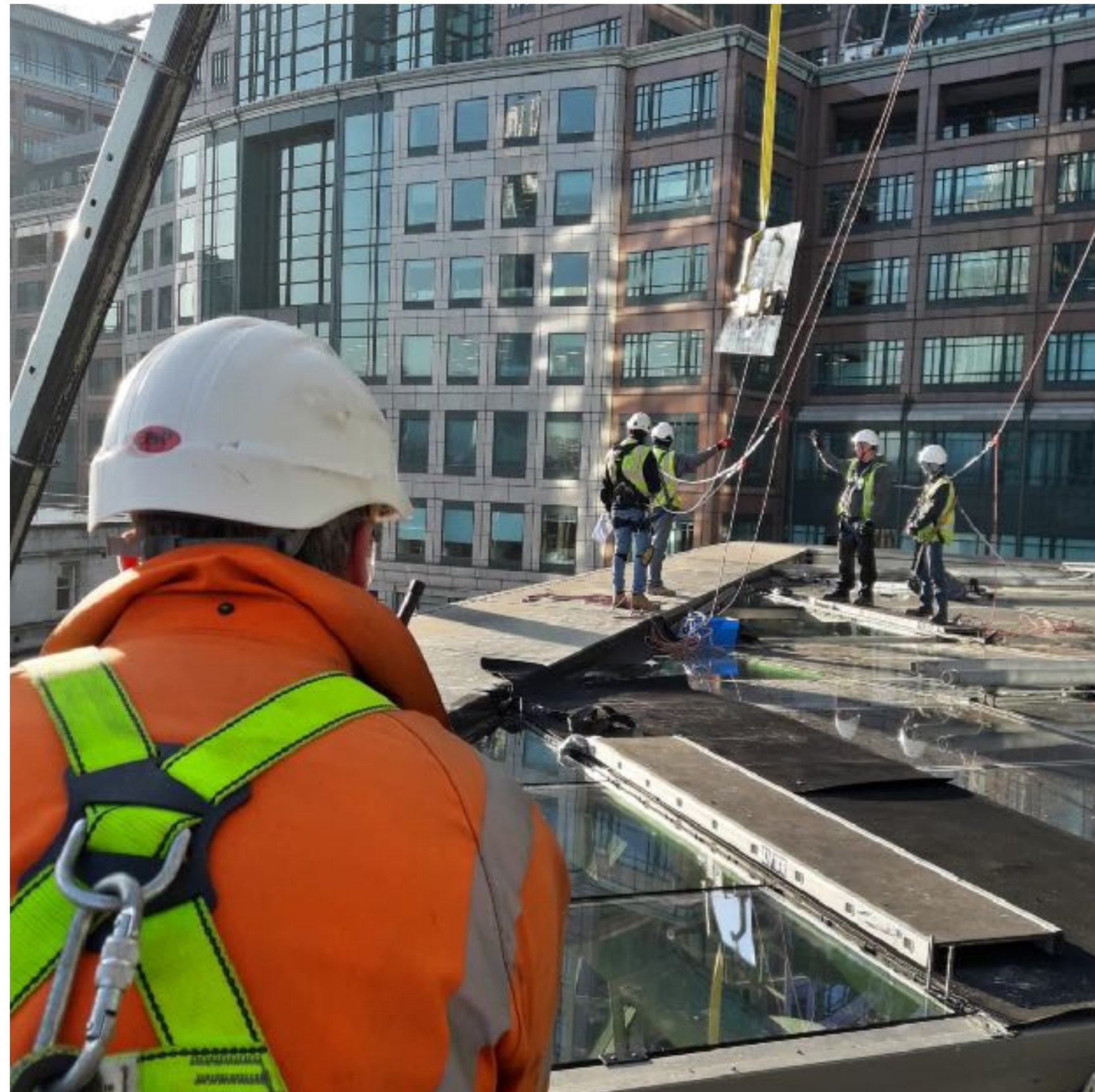
Two Sides of the Same Coin

Glass Aftercare & Open Entrances are two sides of the same coin.

Glass Aftercare works closely with Facilities Management to provide proactive (planned) glazing & façade maintenance and reactive (unplanned) repair.

Open Entrances works with architects and designers to create, engineer and install innovative glass entrances and frameless glass solutions.

Glass Aftercare - Overview



Location: **250 Bishopsgate, City of London** Client: **NatWest**

Key Services: **Glazing Maintenance, H&S Glazing Inspection, Leak Investigation & Repair**

Glass Aftercare is one of the UK's leading commercial glazing specialists. We understand glass maintenance and replacement, façade maintenance, and the servicing, maintenance and repair of both automated and manual doors.

With over 150 years of combined commercial glass maintenance experience at our team's disposal, we know exactly how to tackle all of the issues you face. That's how we're able to offer a huge range of façade and fenestration consultancy and glazing and fenestration services to happy customers across the architectural, facilities management and insurance industries.

We work with a large number of clients throughout London and the Home Counties. If you lease, own or manage a commercial property with a glass façade, glazed roof or automated / manual doors we're able to help fit, maintain, replace or repair them.

Glass Aftercare - Services



Glazing Maintenance

Investing in planned preventative glass maintenance safeguards your investment, protects your corporate brand, keeps your building looking great and significantly lowers your exposure to risk and consequent repair costs.



Glazing Refurbishment

Prevention is better than cure, and when it comes to glass, refurbishing your property's glazing is faster and more cost-effective than a premature replacement. Glass Aftercare will help you to identify issues and act before they become expensive or potentially dangerous problems.



H&S Glazing Inspection

Inspecting your building's glazing and glass façade isn't just something that's nice to do once in a while. It's a health and safety requirement. By inspecting every area of your architectural glazing, including those that are difficult to view or inspect from ground level, Glass Aftercare will ensure that your commitments to health and safety are always met.



Condition & Acquisition Surveys

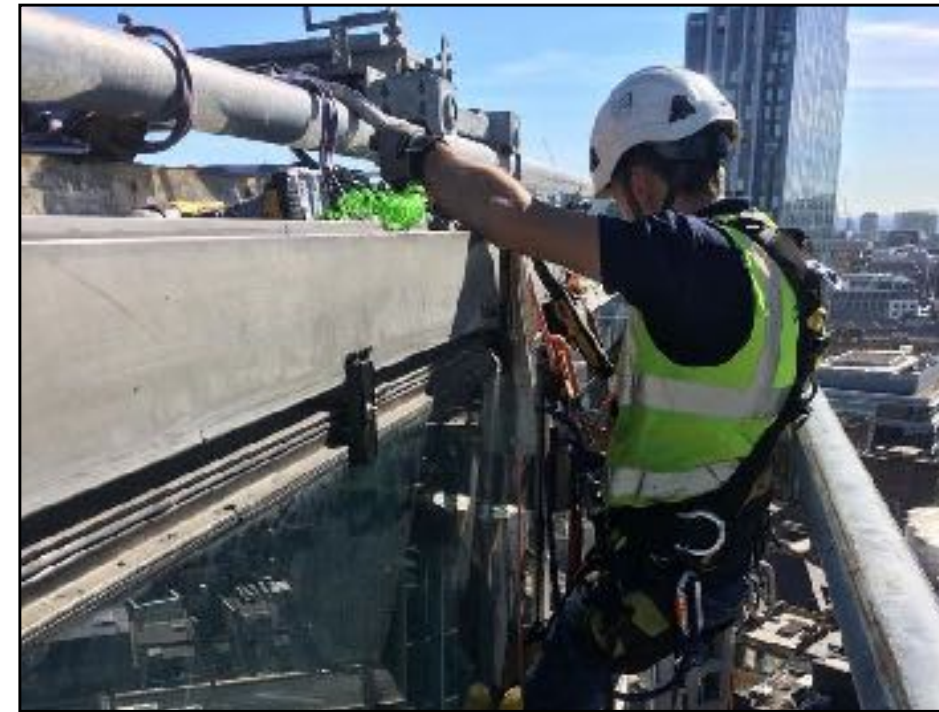
A condition and pre-acquisition survey isn't just a due-diligence box to tick, it can influence your whole purchasing or leasing decision – and it can save you huge amounts of money in the long run.

Glass Aftercare - Services Cont...



Emergency Glazing Repair

Glass Aftercare isn't limited to only maintaining and restoring glass. Our team provide reactive repair services of your glazing whether it be due to nickel sulphide (NiS) inclusion, thermal fracture or impact damage.



Leak Investigation & Repair

Drawing upon years of experience, the Glass Aftercare team will find the source of a leak and diagnose the issue. Once they've located where water is entering your property, we will outline a cost-effective solution to quickly remedy the problem.



Manual & Automatic Door Maintenance

Regular maintenance and service of your automatic doors isn't just best practice, it's something your company is legally obligated to do. Glass Aftercare will schedule and carry out regular maintenance on all of your property's automated doors and make sure you give the right first impression to your clients and meet the relevant standards.



Automatic Door Repair

Glass Aftercare is highly experienced with all makes and models of automatic doors including revolving, linear sliding, curved sliding, drum and swing doors. Our professional engineers have the tools and the experience to quickly fix problems with the minimum of disruption to your business.


Glass Aftercare - Clients



Location: **Centre Point, Tottenham Court Road, London** Client: **Almacantar**
Key Services: **glass restoration & refurbishment of Grade II Listed Building**

Glass Aftercare is the company of choice for the glass maintenance & glazing repair on many of the most prestigious building in and around London.



An aerial photograph of a city skyline, likely London, featuring the Shard and other skyscrapers. A semi-transparent dark grey rectangle is overlaid across the middle of the image, containing white text. The sky is blue with scattered white clouds.

We Restore, Protect & Improve your Buildings and that includes the working environment for your greatest asset, your people.

Open Architecture & Technology for Entrances - Overview



Location: **One Bartholomew, Barts Sq, London** Architect: **Sheppard Robson**
Key Features: **4.6m Oversized Revolving Doors, 4.6m Frameglaze pass doors**

Open Entrances work with architects and designers from the onset of a project providing the technical engineering, design resources and legislative/environmental knowledge on a complete range of glass entrance doors and interior solutions where the height and scale of doors and screens is not restricted by standard limitations.

Being involved at such an early stage of the process allows us to incorporate drive mechanisms, sensors and air curtains below ground enabling us to provide a robust, reliable minimalist and transparent solution to achieve the architectural vision.

Consistently pushing the boundaries of glass entrance doors using innovative technical and aesthetic solutions, we have recently added elegant and unique **Frameglaze™** frameless glazing solutions to our range of products, as the answer to the ever increasing demand for minimalist and full height panels of glass.

Open Architecture & Technology for Entrances - Services



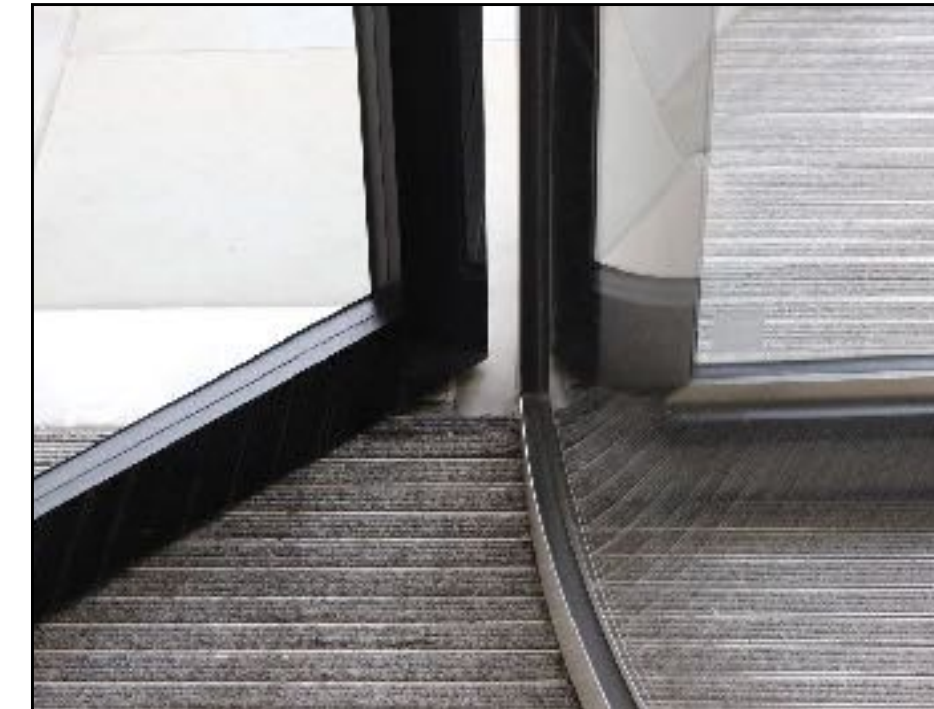
Revolving Doors

Open Entrances is a leading UK supplier, manufacturer and installer of fully automated oversized (tall) revolving glass door systems up to 6 metres in height. Each system is custom built allowing architects and designers to be more creative and not constrain themselves to standard product variants.



Sliding Doors

Our sliding door drive mechanisms are engineered to manoeuvre linear, curved, bi-parting curved and bi-parting drum entrances. Drive mechanisms are concealed either in the soffit above the door or below ground to provide an unobtrusive installation. Once again, due to the robustness of our design, door heights in excess of 6 metres can be achieved.



Swing Doors

Architects and Designers can create dramatic entrances as height is no longer a restriction with our custom built, oversized, manual & automatic swing doors and pass through doors with heights in excess of 6 metres. Concealed mechanisms provide clean lines and elegance.



Frameglaze™

Combining unobtrusive, frameless design with secure, weatherproof construction, Frameglaze™ allows you to realise your design visions without compromise. By concealing fixings, connections and components behind a ceramic band, Frameglaze™ allows for a contemporary, minimalist approach to glazing while still offering thermal efficiency, security and functionality.

Open Architecture & Technology for Entrances - Clients



Location: **One Poultry Lane, London** Architect: **Buckley Gray Yeoman**
Key Features: **5m tall curved glass facades with 5m oversized curved bi-parting sliding doors**

Open Entrances is privileged to regularly work with many of the leading British Architects on creating unique and innovative glass entrances on some of the most iconic buildings in and around London.

make

hamilton
ARCHITECTS

BuckleyGrayYeoman

STANTON
WILLIAMS

FARRER&Co

Foster + Partners

MJP
ARCHITECTS

MRJ RUNDELL + ASSOCIATES



Eric Parry Architects

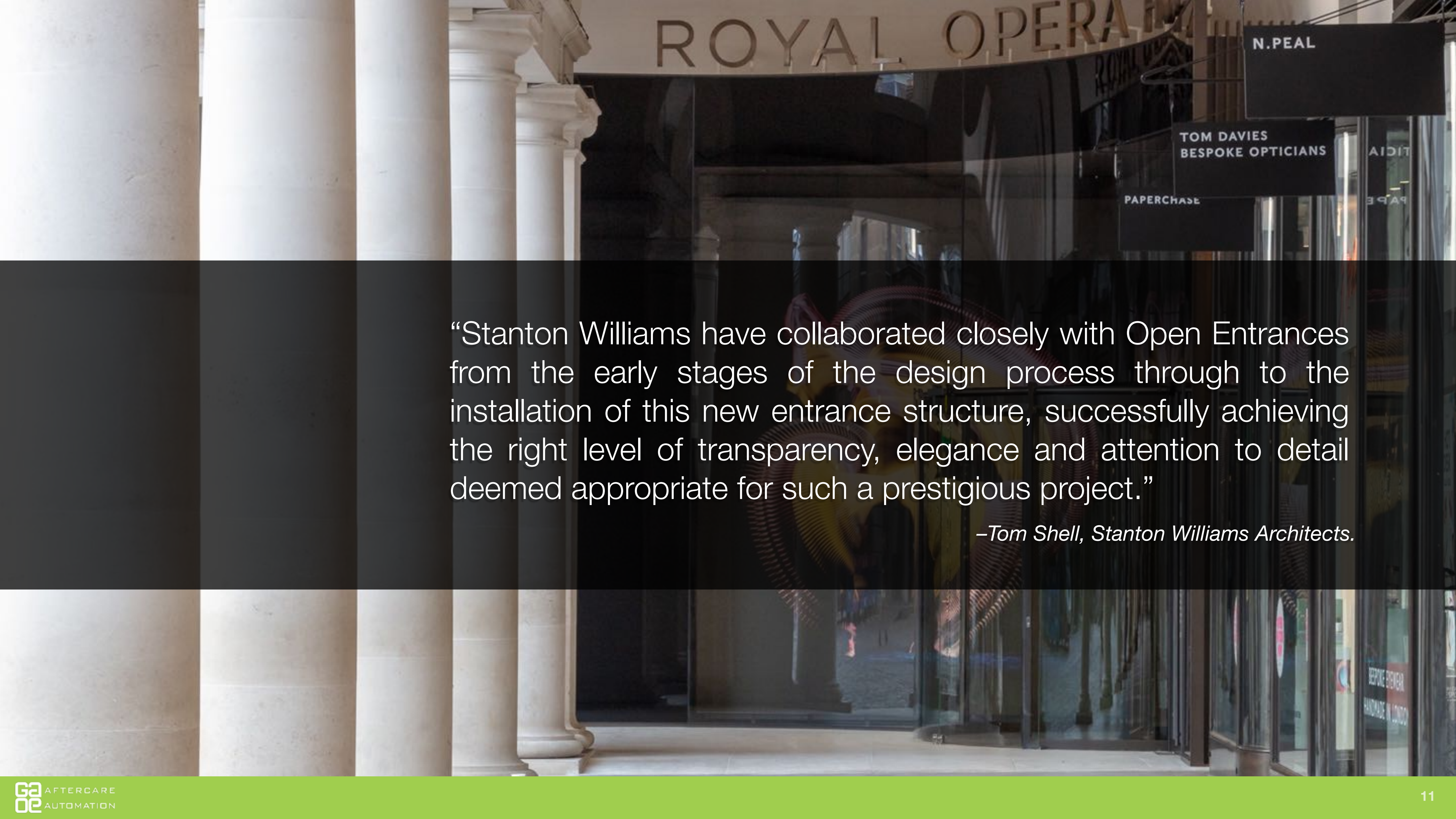
**ALLFORD
HALL
MONAGHAN
MORRIS**

Hopkins Architects

SHEPPARD ROBSON

Squire and Partners

STANHOPE

The background image shows the exterior of the Royal Opera House. On the left, there are several large, classical white columns. To the right, a modern glass entrance structure is visible, reflecting the surrounding environment. Above the glass entrance, the words "ROYAL OPERA" are visible in large, gold-colored letters. To the right of the glass entrance, there are signs for "N. PEAL", "TOM DAVIES BESPOKE OPTICIANS", and "PAPERCHASE".

“Stanton Williams have collaborated closely with Open Entrances from the early stages of the design process through to the installation of this new entrance structure, successfully achieving the right level of transparency, elegance and attention to detail deemed appropriate for such a prestigious project.”

–Tom Shell, Stanton Williams Architects.

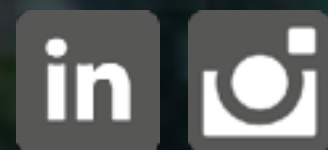
Get in Touch

+44 (0)1923 277901



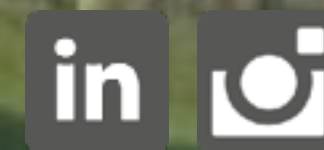
GLASS AFTERCARE

www.glassaftercare.com



OPEN ENTRANCES

www.openentrances.co.uk



Location: **Macallan Distillery, Aberlour, Scotland** Architect: **Rogers Stick Harbour + Partners**
Key Features: **Frameglaze Swing Doors**